

SE

superseries

MODEL

2011

ENTRY FORM

INDEPENDENT ENTRANTS ONLY

AGE DIVISIONS 5 TO 8 9 TO 12 13 TO 16 17 TO 30

NAME SURNAME:

IDENTITY NUMBER: GENDER: MALE FEMALE

RESIDENTIAL ADDRESS:

POSTAL ADDRESS:

E-MAIL ADDRESS:

AGE: DATE OF BIRTH:

PERSONAL TELEPHONE/CELL NUMBER:

PARENT/S TELEPHONE/CELL NUMBER:

FACSIMILE NUMBER:

MODELLING AGENCY/AGENT/SCOUT/SCHOOL/TEAM:

CONTACT PERSON: TELEPHONE:

I/WE HEREBY DECLARE THAT I/WE HAVE READ, UNDERSTAND AND ACCEPT THE RULES OF THE COMPETITION AND THE INFORMATION I/WE HAVE SUPPLIED IS TO THE BEST OF MY KNOWLEDGE TRUE AND CORRECT.

PARENT SIGNATURE
(IF UNDER AGE OF 18)

ENTRANT SIGNATURE

BANKING DETAILS:

ACCOUNT NAME: **NMC**
BANK: **NEDBANK**
ACC NUMBER: **149 721 8322** (CHEQUE ACC)
BRANCH CODE: **149 74500** (PRETORIA BUSINESS)
(REF: YOUR NAME / SURNAME / AGE CATEGORY)

FOR E-MAIL ENTRIES SEND TO:

superseries@nmc fashion.co.za

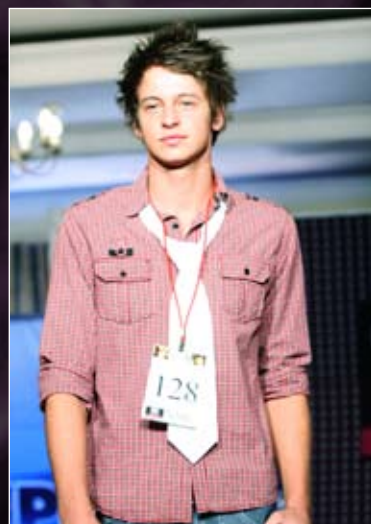
CONTACT DETAILS – 076 727 8868 (14h00 – 17h00)

E-MAIL: **superseries@nmc fashion.co.za**

FACSIMILE DETAILS – 086 564 5134

CLOSING DATE: **2ND JULY 2011**

ENTRY FEE: **R450.00**



WHO MAY ENTER?

- To make the event more accessible to models throughout SA it has been decided for the first time since the inception of the NMC Super Series Cup that we will be permitting independent players / models, who do not belong to a team or have a team, to enter the event.
- They will then be classified as "INDEPENDENTS" and will hence only be able to compete in two categories of the event – namely, OUTFIT OF CHOICE and COCKTAIL WEAR.
- These independents will then only qualify for positions within the category they compete in and the points gained because of the positioning will be forfeited. Points will not accrue to any other team.
- Independents can win medals and can also qualify for the overall cash incentive that can be won.

WHERE AND WHEN?

- All independents and teams must arrive at the PURE JOY LODGE and CONFERENCE CENTRE, Pretoria on own accord by no later than 9h00 on the 4th July 2011.
- The first judging session will begin by no later than 10h00 on the 4th July 2011.
- Failure to arrive by the scheduled time without prior notification and a good reason COULD lead to an immediate disqualification.

HOW TO ENTER?

- Entrants between the ages of 5 and 30 can enter and no prior modelling experience is necessary. Entrants need not belong to a modelling school or Agency or team to enter.
- They shall compete within four (4) age groups namely 5 to 8yrs, 9 to 12, 13 to 16yrs and 17 to 30 yrs.
- Entrants shall pay an initial entry fee of **R450.00 per person** to enter the SUPER SERIES 2011 competition.
- Entry fees must be paid directly into below mentioned account by no later than the 2nd July 2011. Entrants paying the fee before the 2nd June 2011 will get a discount of R50.00.
- **Entrants who pay an additional R30.00 over and above the entry fee will receive 12 months free exposure of the NMC Fashion website.**
- Membership on the website will provide them access to a business platform which will allow them to market and manage themselves as models to industry role players.
- The 12 month membership period will be activated from the moment the entry form and proof of entry fee payment is received.
- All entry fees must be paid into the following bank account –
Acc Name: **NMC**
Bank: **Nedbank**
Acc Number: **149 721 8322**
Branch Number: **14974500** (Pretoria Business)
- Entrants can enter the competition by downloading the entry form via the internet by going to our official website – www.nmcfashion.co.za and clicking on the SUPER SERIES 2011 banner to be found on the HOME PAGE.
- Once downloaded the entrant must complete it (PAGE 2 ONLY), make the payment and then email (superseries@nmcfashion.co.za) or facsimile (086 564 5134) the entry form (PAGE 2 ONLY) together with the proof of payment to our offices.
- Upon receipt of the entry form and proof of payment our office will confirm that your entry has been received.
- For any enquiries please call our offices week days between 14h00 – 17h00 at 076 727 8868.
- Entries for the SUPER SERIES 2011 event will close on the **2nd July 2011**.
- Entries on the day of the event (4th July 2011) will only be accepted if a specific arrangement has been made with the NMC Organisers.

THE EVENT ITSELF

- Males and females shall not compete directly against one another in each age group. Males will compete against males and females against females.
- All participants in an age group for a specific category shall be grouped together and judged by the panel alphabetically irrespective whether they belong to a team or not.
- The teams shall compete against one another in three (3) categories namely OUTFIT OF CHOICE, COCKTAIL LOOK, AND TEAM FASHION SHOW.
- Independents shall only participate in two (2) categories namely, OUTFIT OF CHOICE and a COCKTAIL LOOK.
- Enough time shall be provided to the teams / independents for preparations between the categories.
- We will also host a MEDAL CEREMONY after the final judging session – TEAM FASHION SHOW - on the 4th July 2011.



JUDGING CRITERIA / CLOTHING SELECTION

- With regards to all NMC events it has been decided (and agreed upon) that young models in the age categories 5 – 8 and 9 – 12 may under no circumstances wear clothing that unnecessarily expose their stomachs, thighs or backs. With the exception of lip-gloss no other make-up will be allowed.
- With regards to models in the age categories 13 – 16 and 17 – 30 the models are advised to dress tastefully and respectfully. The unnecessary exposing of their bodies will not be allowed. The minimal usage of make-up will be permitted.
- The NMC reserves the right to ask a model to change into a more appropriate outfit should they feel that the model does not subscribe to the dress/make-up code. A model refusing to change will not be allowed onto the ramp for the specific judging session.

CHOREOGRAPHY / MODELING STYLES

- For the OUTFIT OF CHOICE category the modeling style is the INTERNATIONAL WALK - **1 pose** (straight down pose at end of ramp and off right) – the stride (swaying hips) – the legs (knee lift) – the arms (relaxed) – the chin (up) – the eyes (fixed on a certain point) – the pose (sharp movements).
- For the COCKTAIL LOOK the style will have a more PAGEENTRY feel to it – **2 poses** – as you enter and at the end of the ramp - the stride (slower more graceful) - the legs (closed feminine walk) – the feet (pointy) – the arms (relaxed) – the chin (up) – the eyes (audience and judges) – the poses (feminine stylish movements, soft and glamorous).
- Independents may not participate in the FASHION SHOW category of the event. An independent cannot be part of another teams fashion show. An independent will be disqualified from the event if he/she decides to assist a specific team for the FASHION SHOW category.
- The ramp used at the event is in a T-SHAPE – the T will be on the top end of the ramp as the models enter. The judges shall be sitting at the end of the ramp. We envisage the ramp to be approximately 10 – 14 m in length and 1.2m in width.

POINTS, MEDALS AND TROPHY ALLOCATION

- The Medal Award Ceremonies shall take place at the end of each day. The final ceremony on the 4TH July 2011 will see the announcement of the overall age group, category and team winners.
- Only the top 10 achievers (judges scores) per category from each age group shall be announced at the podium proceedings. Only the top 5 will however be asked to come forward and stand on stage.
- The top 3 shall then be asked to climb on the podium and accept either the gold, silver or bronze medals.
- Both the individual and the team will be acknowledged during the podium proceedings.
- A shortened rendition (about 10 – 20 seconds) of the team song for the gold, silver and bronze medal winners shall then be played.
- In the case of an independent the sound desk will play any tune they deem adequate.
- The point allocation for the **top 10 positions** shall work as follows- **1st gets 1000 points, 2nd gets 900 points, 3rd gets 800 points, 4th gets 700 points, 5th gets 600 points, 6th gets 500 points, 7th gets 400 points, 8th gets 300 points, 9th gets 200 points and 10th gets 100 points.**
- At the end of the tournament all individual points (of the respective judging categories and team members), team bonuses gets added together, minus any penalties, to establish the overall TEAM winner of the event.
- In the case of an independent the points will be forfeited.
- Please note that due to our association with Model Cup all rankings for individuals will be carried through into the Model Cup point allocation structure, provided you are a registered Model Cup member.
- The top 3 teams will be announced and the various team managers shall then be called to the podium to fetch their respective medals.
- The WINNING TEAM of the event shall then take possession of the NMC SUPER SERIES CUP. The floating trophy will be kept by the winning team for a period of one (1) year.

